



Dolben Court, Westminster
London SW1P

GARTONJONES.COM



Dolben Court, Westminster London, SW1P

GARTON JONES.COM

49 Marsham Street Lettings:
London +44 (0) 20 7340 0480
SW1P 3DP westminster@gartonjones.com
www.gartonjones.com

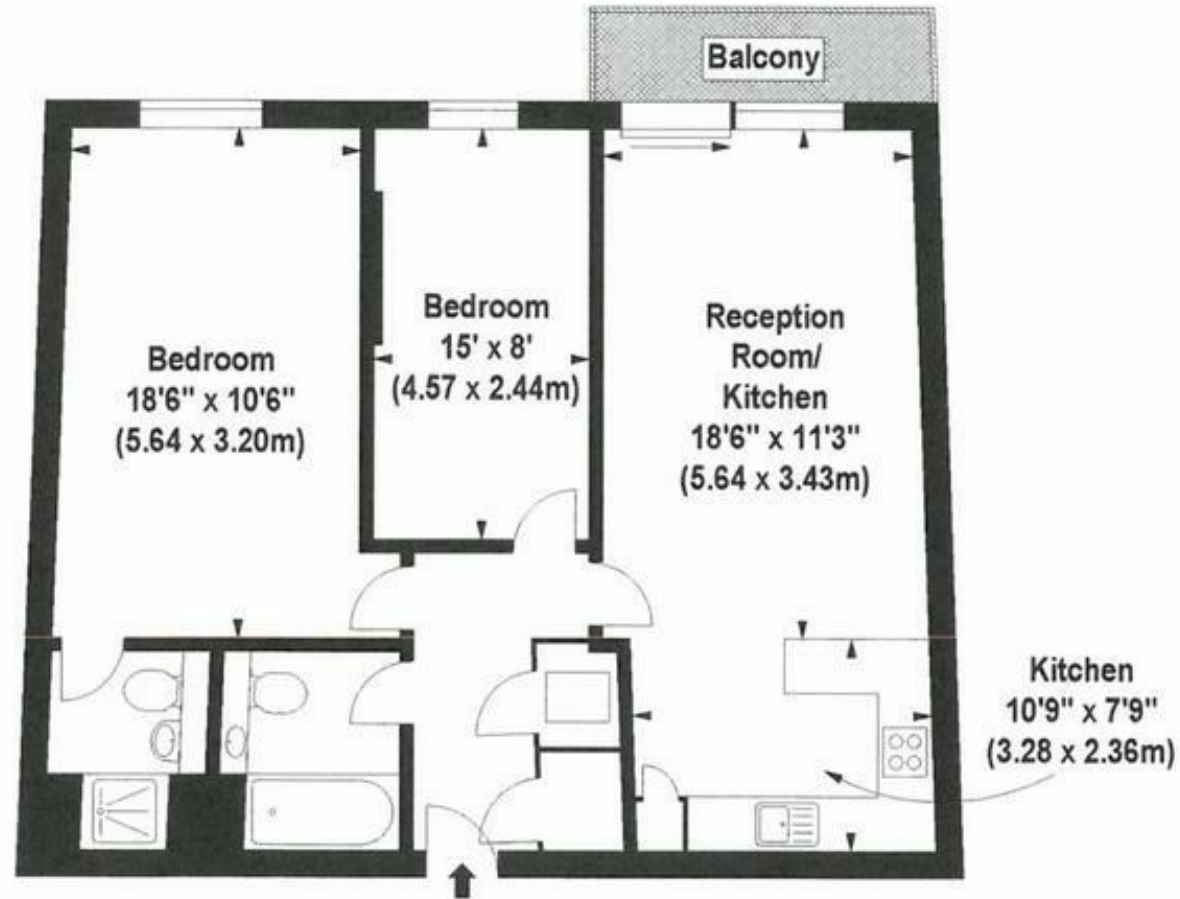
£635 Per Week

A bright and spacious 2 double bedroom apartment of approximately 822sq.ft (76.40sq.m) for sale on the 3rd floor of this luxurious development situated within easy access of the Tube & Rail Services of Pimlico and Victoria. The apartment also boasts 2 bathrooms (1 en-suite), an open plan reception room with modern integrated kitchen, a balcony overlooking the quiet communal gardens, wood flooring, secure underground parking, a 24 hour porter and an excellent residents gymnasium with sauna, Jacuzzi and steam room.

- 2 Double Bedrooms
- 2 Bathrooms (1 En-Suite)
- Open Plan Reception Room
- Modern Integrated Kitchen
- Balcony
- Wood Flooring
- 24 Hour Porter
- Secure Underground Parking
- Lift
- Close To Pimlico Tube & Victoria Mainline Rail Services



Approx. Gross Internal Area *
822 Sq Ft - 76.40 Sq M



Third Floor

